

PanGen® 6A Premium



PanGen® offers a premium-level Category 6A solution that contains a patented technology to optimize performance and provide industry-leading protection from external cable noise sources, also known as alien crosstalk (PSANEXT and PSAACRF).

Key features and benefits of the PanGen® 6A Premium solution:

- Designed to exceed ANSI/TIA 568 C.2 Category 6A channel requirements
- Installations are covered by a 25-year comprehensive warranty program that provides performance to the latest industry standards
- A single point of contact for all PanGen® inquiries
- All connectivity components are 100% performance-tested

Quality installation of PanGen® systems is provided through an extensive network of specially trained and certified Panduit installers. Meeting stringent qualification requirements, our Panduit installers receive continuous training on products, standards and installation practices. PanGen® customers have access to nationwide technical support from the design stage to post-system-installation support.

PanGen® 6A Premium Solution: Category 6A System

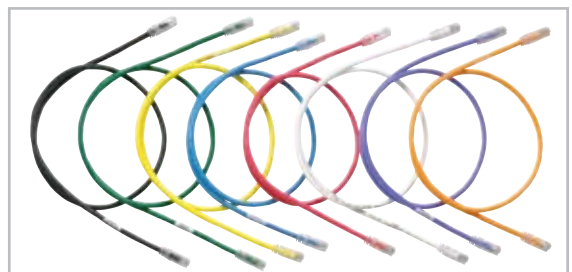
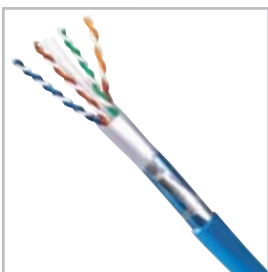
| Electrical Value | Guaranteed Channel Headroom over TIA/EIA Category 6A | Electrical Value | Guaranteed Channel Headroom over TIA/EIA Category 6A |
|------------------|--|------------------|--|
| Insertion Loss | 3% | Return Loss | 3 dB |
| NEXT | 3.5 dB | ACR-N | 6 dB |
| PSNEXT | 5 dB | PSACR-N | 6.5 dB |
| ACR-F | 10 dB | PSANEXT | 2 dB |
| PSACR-F | 10 dB | PSAACR-F | 10 dB |

*Electrical values are above the specified standards and consist of worst pair margin per ANSI/TIA 568 C.2 Category 6A.

The PanGen® 6A Premium system delivers performance on all electrical parameters including alien crosstalk to provide a system that exceeds all applicable standards.

- A 10 MTP™ unshielded-twisted pair (UTP) design that performs like a shielded or foiled-twisted pair (STP/FTP) cable, providing industry-leading protection from external cable noise sources, also known as alien crosstalk
- Mosaic Crossblock™, a thin tape made up of individual metallic blocks separated by an insulating layer. Since there is no metal-to-metal contact, there is no path for current to flow longitudinally, and thus, no need for grounding
- TRU-Mark® footage marking system to help eliminate unused lengths of cable and save installation time
- Patent-pending Enhanced Giga-TX™ technology for jack module termination, which optimizes performance by maintaining cable pair geometry and eliminating conductor untwist
- Keyed connectivity available to mechanically and visually distinguish connections to prevent unintentional mating with unlike keyed or non-keyed ports accommodating discrete networks
- Patch cords include slender strain-relief boots for easy access in high density applications and patented tangle-free latch which prevents snags and provides easy release for easy moves, adds and changes
- Modular and punchdown patch panels in flat, angled and high density versions (48-port, 1 RU)

For additional connectivity components, visit www.panduit.com



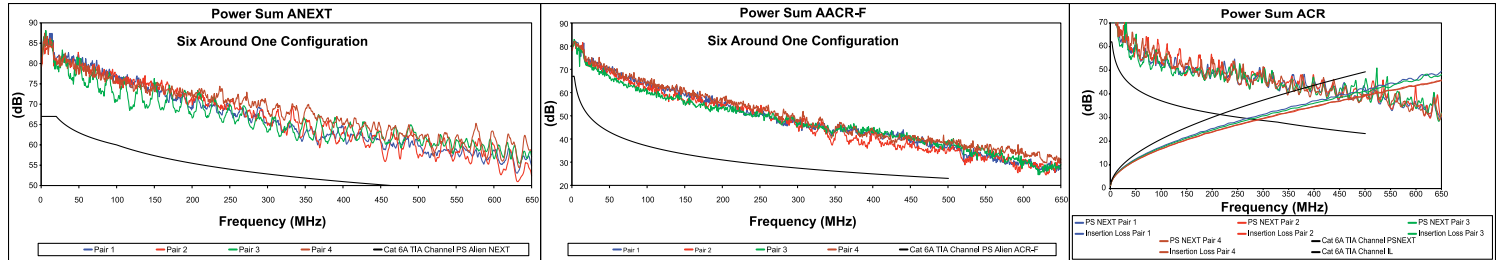
Complete end-to-end system from General Cable and Panduit



PanGen® 6A Premium



Performance Charts GenSPEED® 10 MTP™ CMP



General Cable GenSPEED® 10 MTP™ Category 6A Premium Cable

| Jacket Color | Spool | |
|--------------|-------------|--------------|
| | CMR (Riser) | CMP (Plenum) |
| Blue | 7133849 | 7131849 |
| White | 7133850 | 7131850 |
| Yellow | 7133851 | 7131851 |
| Gray | 7133852 | 7131852 |
| Red | 7133853 | 7131853 |
| Orange | 7133854 | 7131854 |
| Green | 7133855 | 7131855 |
| Black | 7133856 | 7131856 |
| Pink | 7133857 | 7131857 |
| Purple | 7133858 | 7131858 |

Panduit Category 6A Components

| Part Number | Description |
|---------------------------|--|
| Jack Modules | |
| CJ6X88TGIW* | Mini-Com® TX6A™ 10 Gig™ UTP Jack Module |
| Keyed Jack Modules | |
| CJK6X88TGBL** | Mini-Com® TX6A™ 10Gig™ Keyed UTP Jack Module |

*For standard colors other than Off White (IW), replace suffix with BL (Black), BU (Blue), RD (Red), YL (Yellow), GR (Green), EI (Electric Ivory), IG (International Gray), WH (White), OR (Orange) or VL (Violet).

**For standard colors other than Black (BL), replace suffix with BU (Blue), RD (Red), YL (Yellow), GR (Green) or OR (Orange), each color representing a different keyed configuration.

| Part Number | Description |
|--------------------------|-----------------------------------|
| Patch Cords | |
| UTP6A3^Y | TX6A™ 10Gig™ UTP Patch Cord |
| Keyed Patch Cords | |
| UTPK6A3BL^^ | TX6A™ 10Gig™ Keyed UTP Patch Cord |

^ For standard lengths 3 to 20 feet (one-foot increments) and 25, 30, 35, 40 feet, change the length designation in the part number to the desired length. For standard cable colors other than Off White, add suffix BL (Black), BU (Blue), RD (Red), YL (Yellow), GR (Green), OR (Orange) or VL (Violet) to the end of the part number. For example, the part number of a blue, 15-foot patch cord is UTP6A15BU.

^^ For standard lengths other than 3 feet (5, 7, 10, 14 feet), change the length designation in the part number to the desired length. For standard cable colors other than Black (BL), replace suffix with BU (Blue), RD (Red), YL (Yellow), GR (Green) or OR (Orange) at the end of the part number. For example, the part number of a blue, 15-foot, keyed patch cord is UTPK6A15BU.

| Part Number | Description | No. of Rack Spaces |
|-------------------------------|--|--------------------|
| Modular Patch Panels | | |
| CPPA24FMWBLY | Mini-Com®, Angled, 24-port, flush mount modular patch panel | 1 |
| CPPA48FMWBLY | Mini-Com®, Angled, 48-port, flush mount modular patch panel | 2 |
| CPP24FMWBLY | Mini-Com®, Straight, 24-port, flush mount modular patch panel | 1 |
| CPP48FMWBLY | Mini-Com®, Straight, 48-port, flush mount modular patch panel | 2 |
| Punchdown Patch Panels | | |
| DPA246X88TGY | 24-port, Angled, Category 6A, 10 Gb/s patch panel with 24 RJ45, 8-position, 8-wire ports | 1 |
| DPA486X88TGY | 48-port, Angled, Category 6A, 10 Gb/s patch panel with 48 RJ45, 8-position, 8-wire ports | 2 |
| DP246X88TGY | 24-port, Straight, Category 6A, 10 Gb/s patch panel with 24 RJ45, 8-position, 8-wire ports | 1 |
| DP486X88TGY | 48-port, Straight, Category 6A, 10 Gb/s patch panel with 48 RJ45, 8-position, 8-wire ports | 2 |

For complete offering of modular patch panels, including high density versions, visit www.panduit.com



18900 Panduit Drive
Tinley Park, IL 60487
(800) 777-3300
www.panduit.com
cs@panduit.com
SA-CODS04



4 Tesseneer Dr.
Highland Heights, KY 41076
(800) 424-5666
www.generalcable.com
info@generalcable.com
Form No. DAT-0135-0510



www.pangensolutions.com

GENERAL CABLE, GEN SPEED, 10 MTP, MOSAIC CROSSBLOCK and TRU-Mark are trademarks of General Cable Technologies Corporation. PAN GEN is a registered trademark of General Cable Technologies Corporation and Panduit.
36498