

PanGen® 6 Enhanced



Key features and benefits of the PanGen® 6 Enhanced solution:

- Designed to exceed ANSI/TIA 568 C.2 Category 6 channel requirements
- Installations are covered by a 25-year comprehensive warranty program that provides performance to the latest industry standards
- A single point of contact for all PanGen® inquiries
- All connectivity components are 100% performance-tested

Quality installation of PanGen® systems is provided through an extensive network of specially trained and certified Panduit installers. Meeting stringent qualification requirements, our Panduit installers receive continuous training on products, standards and installation practices. PanGen® customers have access to nationwide technical support from the design stage to post-system-installation support.

PanGen® 6 Enhanced Solution: Category 6 System

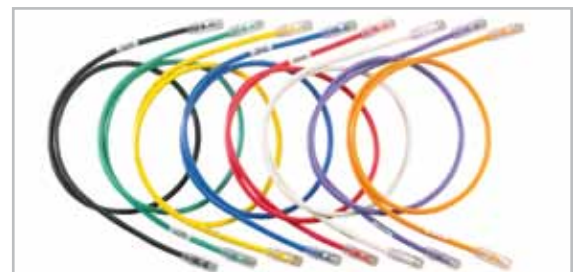
Electrical Value	Guaranteed Channel Headroom over TIA/EIA Category 6 at 250 MHz
Insertion Loss	5%
NEXT	4.5 dB
PSNEXT	5 dB
ACR	5.5 dB
PSACR	7.5 dB
ELFEXT	6 dB
PSELFEXT	8 dB
Return Loss	2 dB

*Electrical values are above the specified standards and consist of worst pair margin per ANSI/TIA/EIA 568 C.2 Category 6.

PanGen® 6 Enhanced systems deliver mid-level performance on all electrical parameters to provide a system that exceeds all applicable standards.

- Innovative cable cross-web design allowing for maximum pair separation, increasing key electrical performance parameters
- TRU-Mark® footage marking system to help eliminate unused lengths of cable and save installation time
- Patent-pending Enhanced Giga-TX™ technology for jack module termination, which optimizes performance by maintaining cable pair geometry and eliminating conductor untwist
- Keyed connectivity available to mechanically and visually distinguish connections to prevent unintentional mating with unlike keyed or non-keyed ports accommodating discrete networks
- Patch cords include slender strain-relief boots for easy access in high density applications and patented tangle-free latch which prevents snags and provides easy release for easy moves, adds and changes
- Modular and punchdown patch panels in flat, angled and high density versions (48-port, 1 RU)

For additional connectivity components, visit www.panduit.com



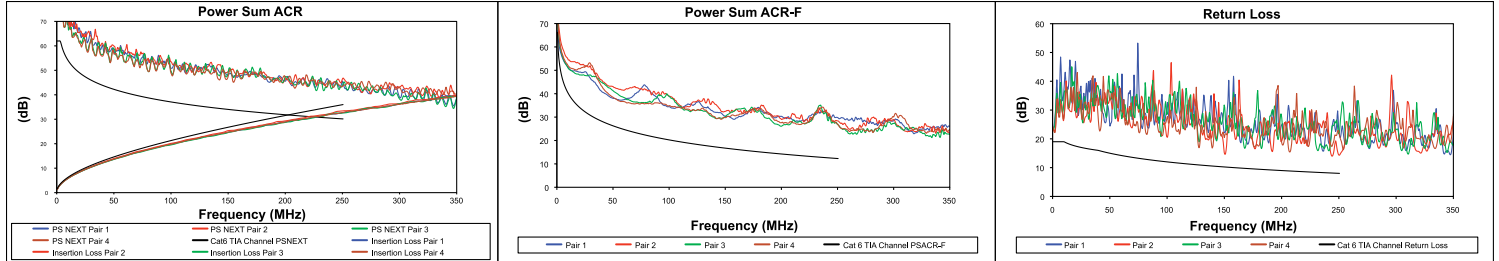
Complete end-to-end system from General Cable and Panduit



PanGen® 6 Enhanced



Performance Charts GenSPEED® 6000 Enhanced CMP



PanGen® 6 Enhanced Solution: Mid-Level Category 6 System

Frequency (MHz)	TIA/EIA Cat 6 Insertion Loss (dB)	Guaranteed PanGen 6E Insertion Loss (dB)	TIA/EIA Cat 6 PSNEXT (dB)	Guaranteed PanGen 6E PSNEXT (dB)	TIA/EIA Cat 6 PSACR (dB)	Guaranteed PanGen 6E PSACR (dB)	TIA/EIA Cat 6 PSELFEXT (dB)	Guaranteed PanGen 6E PSELFEXT (dB)	TIA/EIA Cat 6 Return Loss (dB)	Guaranteed PanGen 6E Return Loss (dB)
1	2.1	2.0	62.0	67.0	59.9	64.8	60.3	68.3	19.0	21.0
4	4.0	3.8	60.5	65.5	56.5	61.3	48.2	56.2	19.0	21.0
10	6.3	6.0	54.0	59.0	47.7	52.4	40.3	48.3	19.0	21.0
16	8.0	7.6	50.6	55.6	42.6	47.2	36.2	44.2	18.0	20.0
20	9.0	8.6	49.0	54.0	40.0	44.6	34.2	42.2	17.5	19.5
31.25	11.4	10.8	45.7	50.7	34.3	38.7	30.4	38.4	16.5	18.5
62.5	16.5	15.7	40.6	45.6	24.1	28.3	24.3	32.3	14.0	16.0
100	21.3	20.2	37.1	42.1	15.8	19.7	20.3	28.3	12.0	14.0
200	31.5	29.9	31.9	36.9	0.4	3.8	14.2	22.2	9.0	11.0
250	35.9	34.1	30.2	35.2	—	—	12.3	20.3	8.0	10.0
300	—	37.4	—	33.8	—	—	—	18.7	—	9.2
400	—	44.6	—	30.8	—	—	—	16.2	—	8.0
500	—	51.4	—	28.2	—	—	—	14.3	—	8.0

General Cable GenSPEED® 6000 Enhanced Category 6 Cable

Jacket Color	Pull-Pac® II	
	CMR (Non-Plenum)	CMP (Plenum)
Blue	7133900	7131900
White	7133901	7131901
Yellow	7133902	7131902
Gray	7133903	7131903
Red	7133904	7131904
Orange	7133905	7131905
Green	7133906	7131906
Black	7133907	7131907
Pink	7133908	7131908
Purple	7133909	7131909

Panduit Category 6 Components

Part Number	Description	Part Number	Description
Jack Modules		Patch Cords	
CJ688TGIW*	Mini-Com® TX6™ PLUS UTP Jack Module	UTPSP3Y^	TX6™ PLUS UTP Patch Cord
Keyed Jack Modules		Keyed Patch Cords	
CJK688TGBl**	Mini-Com® TX6™ PLUS Keyed UTP Jack Module	UTPKSP3BL^^	TX6™ PLUS Keyed UTP Patch Cord

*For standard colors other than Off White (W), replace suffix with BL (Black), BU (Blue), RD (Red), YL (Yellow), GR (Green), EI (Electric Ivory), IG (International Gray), WH (White), OR (Orange) or VL (Violet).

**For standard colors other than Black (BL), replace suffix with BU (Blue), RD (Red), YL (Yellow), GR (Green) or OR (Orange), each color representing a different keyed configuration.

^ For standard lengths 1 to 20 feet (one-foot increments) and 25, 30, 35, 40 feet, change the length designation in the part number to the desired length. For standard cable colors other than Off White, add suffix BL (Black), BU (Blue), RD (Red), YL (Yellow), GR (Green), OR (Orange) or VL (Violet) to the end of the part number. For example, the part number of a blue, 15-foot patch cord is UTPSP15BU.

^^ For standard lengths other than 3 feet (5, 7, 10, 14 feet), change the length designation in the part number to the desired length. For standard cable colors other than Black (BL), replace suffix with BU (Blue), RD (Red), YL (Yellow), GR (Green) or OR (Orange) at the end of the part number. For example, the part number of a blue, 15-foot, keyed patch cord is UTPKSP15BU.

Part Number	Description	No. of Rack Spaces
Modular Patch Panels		
CPPA24FMWBLY	Mini-Com®, Angled, 24-port, flush mount modular patch panel	1
CPPA48FMWBLY	Mini-Com®, Angled, 48-port, flush mount modular patch panel	2
CPP24FMWBLY	Mini-Com®, Straight, 24-port, flush mount modular patch panel	1
CPP48FMWBLY	Mini-Com®, Straight, 48-port, flush mount modular patch panel	2
Punchdown Patch Panels		
DPA24688TGY	24-port, Angled, Category 6, patch panel with 24 RJ45, 8-position, 8-wire ports	1
DPA48688TGY	48-port, Angled, Category 6, patch panel with 48 RJ45, 8-position, 8-wire ports	2
DP12688TGY	12-port, Straight, Category 6, patch panel with 12 RJ45, 8-position, 8-wire ports Mounts to 89D wall mount bracket	—
DP24688TGY	24-port, Straight, Category 6, patch panel with 24 RJ45, 8-position, 8-wire ports	1
DP48688TGY	48-port, Straight, Category 6, patch panel with 48 RJ45, 8-position, 8-wire ports	2

For complete offering of modular patch panels, including high density versions, visit www.panduit.com



18900 Panduit Drive
Tinley Park, IL 60487
(800) 777-3300
www.panduit.com
cs@panduit.com
SA-CODS02



4 Tessenner Dr.
Highland Heights, KY 41076
(800) 424-5666
www.generalcable.com
info@generalcable.com
Form No. DAT-0136-R0311



www.pangensolutions.com

GENERAL CABLE, GEN SPEED, PULL-PAC and TRU-Mark are trademarks of General Cable Technologies Corporation. PAN GEN is a registered trademark of General Cable Technologies Corporation and Panduit.
39552