

# Super Vu-Tron<sup>®</sup> Canadian Type G and Type G-GC Round

## 90°C (UL) 2000 Volt Portable Power Cable

**Product Construction:**

**Conductor:**

- 6 AWG. through 4/0 fully annealed stranded bare copper

**Insulation:**

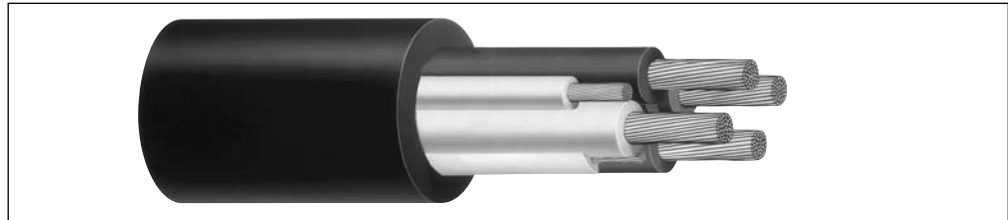
- Premium-grade, color-coded 90°C EPDM
- Color Code: See chart below
- Insulated yellow ground check

**Jacket:**

- Super Vu-Tron<sup>®</sup> 90°C, Black
- Temperature Range: -40°C to +90°C

**Jacket Marking:**

- CAROL SUPER VU-TRON (SIZE) TYPE G-GC 2KV 90C (-40C) WET FT-5 CSA LR92874 P-7K-123049 MSHA
- TYPE G-GC (LARGER THAN 4/0) - (SIZE) TYPE G-GC CAROL SUPER VU-TRON 90C DRY AND WATER RESISTANT 75C 2000V SUN RES (UL) P-7K-123033 MSHA LR 27161
- TYPE G - CAROL SUPER VU-TRON (SIZE) TYPE G PORTABLE POWER CABLE (UL) 600/2000V DRY 90C WET 75C SUN RES CSA (-40C) FT-5 P-7K-123049 MSHA



3 CONDUCTOR – TYPE G-GC – 2000 VOLT													
CATALOG NUMBER	NO. OF COND.	AWG. SIZE	COND. STRAND	NOMINAL COND. O.D.		YELLOW GROUND CHECK AWG. SIZE	GREEN GROUND COND. AWG. SIZE	NOMINAL INS. THICKNESS		NOMINAL O.D.		CURR. AMPS <sup>(1)</sup>	APPROX. NET WT. LBS/ M <sup>(5)</sup>
				INCHES	mm			INCHES	mm	INCHES	mm		
83113	3	6	259	0.210	5.33	10	2#10	0.060	1.52	1.025	26.04	87	827
83123	3	4	259	0.245	6.22	10	2#8	0.060	1.52	1.140	28.96	114	1063
83133*	3	2	259	0.334	8.48	8	2#6	0.060	1.52	1.300	33.02	152	1590
83143	3	1	259	0.375	9.53	8	2#6	0.080	2.03	1.495	37.97	177	1980
83153	3	1/0	259	0.385	9.78	8	2#4	0.080	2.03	1.560	39.62	205	2467
83163*	3	2/0	259	0.475	12.07	8	2#4	0.080	2.03	1.670	42.42	237	2480
83183*	3	4/0	259	0.570	14.48	8	2#2	0.080	2.03	1.975	50.17	316	3744

<sup>(1)</sup> Ampacity rating based on CEC/CSA.  
<sup>(5)</sup> Actual shipping weight may vary.

**COLOR CODE CHART**

NO. OF CONDUCTORS	COLOR
3	Black, Red, Blue

**Applications:**

- Industrial and light- to medium-duty mining applications
- Heavy-duty service as power supply cable
- Mobile and portable electrical equipment
- 3- and 4-conductor—use on three-phase AC systems where grounding is required

**Features:**

- Excellent impact and abrasion resistance
- Withstand exposure to oil, acids, alkalies, heat, moisture and most chemicals
- Indent-printed for easy identification
- Rope lay stranding for maximum flex life
- Cable core bound for superior flexibility and toughness
- Non-wicking rubber fillers (GGC)
- Canadian color code available upon request

**Industry Approvals:**

- UL Type G, G-GC
- CSA
- MSHA Approved
- RoHS Compliant

**Packaging:**

- Lengths cut to order

