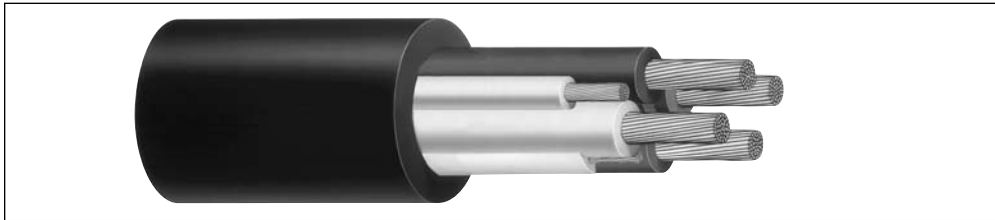


# Super Vu-Tron® Type G and Type G-GC Round

## 90°C (UL) 2000 Volt Portable Power Cable



**Product Construction:**

**Conductor:**

- 8 AWG. through 500 MCM fully annealed stranded bare copper

**Insulation:**

- Premium-grade, color-coded 90°C EPDM
- Color Code: See chart below
- Insulated grounds and ground checks

**Jacket:**

- Super Vu-Tron® 90°C, Black
- Temperature Range: -40°C to +90°C

**Jacket Marking:**

- TYPE G-GC (4/0 AND SMALLER) – CAROL SUPER VU-TRON (SIZE) TYPE G-GC PORTABLE POWER CABLE (UL) 2000V DRY 90C WET 75C SUN RES CSA (-40C) FT-5 P-7K-123049 MSHA
- TYPE G-GC (LARGER THAN 4/0) – (SIZE) TYPE G-GC CAROL SUPER VU-TRON 90C DRY AND WATER RESISTANT 75C 2000V SUN RES (UL) P-7K-123033 MSHA LR 27161
- TYPE G – CAROL SUPER VU-TRON (SIZE) TYPE G PORTABLE POWER CABLE (UL) 600/2000V DRY 90C WET 75C SUN RES CSA (-40C) FT-5 P-7K-123049 MSHA

**3 CONDUCTOR – TYPE G-GC – 2000 VOLT**

CATALOG NUMBER	NO. OF COND.	AWG. OR MCM	COND. STRAND	NOMINAL COND. O.D.		YELLOW GROUND CHECK AWG. SIZE	GREEN GROUND COND. AWG. SIZE	NOMINAL INS. THICKNESS		NOMINAL O.D.		CURR. AMPS <sup>(1)</sup>	APPROX. NET WT. LBS/ M <sup>(5)</sup>
				INCHES	mm			INCHES	mm	INCHES	mm		
82313	3	8	133	0.167	4.24	10	2#10	0.060	1.52	0.965	24.51	65	609
82623	3	6	259	0.210	5.33	10	2#10	0.060	1.52	1.050	26.67	87	797
82643	3	4	259	0.245	6.22	10	2#8	0.060	1.52	1.145	29.08	114	984
82663	3	2	259	0.334	8.48	10	2#7	0.080	2.03	1.345	34.16	152	1465
82373 <sup>(2)</sup>	3	1	259	0.375	9.53	8	2#6	0.080	2.03	1.465	37.21	177	1807
82383 <sup>(2)</sup>	3	1/0	259	0.385	9.78	8	2#5	0.080	2.03	1.605	40.77	205	2405
82393 <sup>(2)</sup>	3	2/0	259	0.475	12.07	8	2#4	0.080	2.03	1.715	43.56	237	2510
82403 <sup>(2)</sup>	3	3/0	259	0.480	12.19	8	2#3	0.080	2.03	1.850	46.99	274	3773
82413 <sup>(2)</sup>	3	4/0	259	0.570	14.48	8	2#2	0.080	2.03	1.980	50.29	316	3946
82423 <sup>(2)*</sup>	3	250	627	0.615	15.62	8	2#2	0.095	2.41	2.390	60.71	352	6060
82443 <sup>(2)*</sup>	3	350	855	0.725	18.42	8	2#1/0	0.095	2.41	2.680	68.07	433	7400
82473 <sup>(2)*</sup>	3	500	1235	0.880	22.35	8	2#2/0	0.095	2.41	3.030	76.96	526	10100

**4 CONDUCTOR – TYPE G – 600/2000 VOLT**

CATALOG NUMBER	NO. OF COND.	AWG. OR MCM	COND. STRAND	NOMINAL COND. O.D.		GREEN COND. AWG. SIZE	NOMINAL INS. THICKNESS		NOMINAL O.D.		CURRENT AMPS <sup>(1)</sup>	APPROX. NET WT. LBS/ M <sup>(5)</sup>
				INCHES	mm		INCHES	mm	INCHES	mm		
82314	4	8	133	0.167	4.24	4#12	0.060	1.52	1.045	26.54	52	705
82624	4	6	259	0.210	5.33	4#12	0.060	1.52	1.125	28.58	70	914
82644	4	4	259	0.245	6.22	4#10	0.060	1.52	1.210	30.73	91	1370
82664	4	2	259	0.334	8.48	4#9	0.080	2.03	1.435	36.45	122	1802
82374 <sup>(2)*</sup>	4	1	259	0.375	9.53	4#8	0.080	2.03	1.650	41.91	142	2479
82384 <sup>(2)</sup>	4	1/0	259	0.385	9.78	4#7	0.080	2.03	1.720	43.69	164	3080
82394 <sup>(2)</sup>	4	2/0	259	0.475	12.07	4#6	0.080	2.03	1.860	47.24	190	3119
82404 <sup>(2)</sup>	4	3/0	259	0.480	12.19	4#5	0.080	2.03	2.075	52.71	219	4542
82414 <sup>(2)</sup>	4	4/0	259	0.570	14.48	4#4	0.080	2.03	2.155	54.74	253	5078

<sup>(1)</sup> Ampacities based on 90°C Conductor and 30°C Ambient temperature per table 400.5(B) of the National Electrical Code®.

<sup>(2)</sup> UL Listed and c(UL) certified.

\* Non-stock item; minimum quantity purchase required.

<sup>(5)</sup> Actual shipping weight may vary.

**COLOR CODE CHART**

NO. OF CONDUCTORS	COLOR
3	Black, White, Red
4	Black, White, Red, Orange

**Applications:**

- Industrial and light- to medium-duty mining applications
- Heavy-duty service as power supply cable
- Mobile and portable electrical equipment
- 3- and 4-conductor—use on three-phase AC systems where grounding is required

**Features:**

- Excellent impact and abrasion resistance
- Withstand exposure to oil, acids, alkalis, heat, moisture and most chemicals
- Indent-printed for easy identification
- Rope lay stranding for maximum flex life
- Cable core bound for superior flexibility and toughness
- Non-wicking rubber fillers (GGC)
- Canadian color code available upon request

**Industry Approvals:**

- UL Type G, G-GC
- CSA
- MSHA Approved
- RoHS Compliant

**Packaging:**

- Lengths cut to order

