



Energy generation, transmission and distribution are General Cable's most rapidly growing markets. General Cable is meeting this growing need with a complete range of specialized products and technical expertise.

Transmission and Distribution

TransPowr®

Overhead Transmission & Distribution Conductors

TransPowr® Overhead Conductors

- Conductor Types: AAC, AAAC, ACSR, ACSS, AACAR, ACAR
- Steel Options: Galvanized - S1A, GA2, S2A, GA3, S3A, GA4, S4A; Mischmetal - MA2, MA3, MA4, MA5, AW, AZ
- Design Options: Trapezoidal Aluminum Conductors (TW); Motion Resistance Twisted Pair Conductors (T-2®); Smooth Body Aluminum Conductors (ASC); Higher Conductivity Aluminum (HC); Non-Specular Aluminum Surface Finish (NS)
- AAC & ACSR Covered Conductors: PE, HDPE, Track Resistant PE XLPE, HDXLPE, Track Resistant XLPE
- Other Conductors: Aluminum Tie Wire, Steel Guy Wire, AW Wire, MHD and HD Copper Conductor

TransPowr® Higher Performance Products

- High Temperature, High Strength Conductors: ACSS MA5, ACSS/MA5/TW
- High Temperature Low Sag Conductors
- Motion Resistance Twisted Pair Conductors (T-2®): AAC/ T-2®, ACSR/ T-2®, AAAC/ T-2®
- Trapezoidal Aluminum / Aluminum Alloy Designs
- High Strength River Crossing Designs

Silec Cable

Underground Transmission Cables

Manufacturing

- Aluminum and Copper Conductor Sizes up to 5000 kcmil (2500 mm²)
- Triple-head Extrusion Process on the Only One-of-its-Kind 100 m Deep Vertical Line Shaft
- High-performance, Ultra-clean Insulation and Conductor Shields
- Metallic Sheathing Options to Meet Customer Requirements
- µCable (up to 2 FO) Integrated for Temperature Monitoring via DTS System, PD Detection and Other Diagnosis Capabilities

Terminations

- Outdoor Composite or Porcelain Terminations, Synthetic Terminations, GIS and Transformer (SF6 and/or oil), and Transition Joints

Joints

- With or Without Grounding System, with Shield Interruption, and with Solutions for Water Tightness.

Accessories

- Link Boxes and Additional Installation Materials

Turnkey Services

- System and Installation Engineering
- Project, Safety and Environmental Management
- Cable Pulling; Accessory Installation and Termination Services
- On-site Testing and Commissioning
- Emergency After-Sales Service
- Training

EmPowr® Medium-Voltage Primary Distribution Cables

EmPowr® Link TRXLPE cables are recommended for all applications and are the first choice for primary distribution service applications such as underground residential and rural systems.

EmPowr® Fill EPR cables are recommended for higher temperature underground primary feeders and substation getaway applications.

EmPowr® Link and EmPowr® Fill Features

- | | |
|---|---|
| <ul style="list-style-type: none"> ➤ TRXLPE and EPR <ul style="list-style-type: none"> ➤ 2 AWG - 1500 kcmil AL ➤ 2 AWG - 1500 kcmil Cu ➤ Concentric Round Copper Wire and Flat Strap Neutrals ➤ Longitudinally Applied Corrugated Tape (LACT) Cu Shields ➤ Copper Tape (Helically Applied) & Wire Shields ➤ Jacket Options: LLDPE, SCPE, XLPE, Polypropylene, PVC | <ul style="list-style-type: none"> ➤ Water Blocked Designs: STRANDFILL®, BIFILL® and TRIFILL® ➤ Combined Duct and Cable (CDC®) ➤ CSA 90°C and 105°C Medium-Voltage Power Cable ➤ UL Type MV-90 and MV-105 ➤ PowrPak – Reduced Diameter PILC Replacement Design |
|---|---|



PowerServ® Secondary Distribution Cables

PowerServ® OH Low-Voltage Overhead Service Drop — Duplex, Triplex & Quadruplex

- 1350 Aluminum and Copper Conductors
- AAC (ASC), AAAC (AASC or AACSR) or ACSR Bare Neutral Messenger
- PE or XLPE Insulation
- RTS (Reverse Twist Secondary) and PLAC (Parallel Lashed)
- CSA NS75, NS75/FT1, NS90, and NS90/FT1

PowerServ® XL Low-Voltage Underground Distribution — Single, Duplex, Triplex & Quadruplex

- Copper and 1350 or 8000 Aluminum Conductor
- XLPE and PVC Insulation; Abuse Resistant Single (HDXLPE) and Two Layer (XLPE/HDXLPE)
- UL Type USE-2, XHHW-2, RHH/RHW-2
- CSA Type USEI 75 USEI 90, and USEB 90,
- CSA Type RW90, RWU90, TW75, and TWU75

PowerNet® Low-Voltage Underground Network

- Copper and Aluminum Conductor
- EPR or Flame Retardant EAM Insulated and LSHF Jacketed

Wind Power

General Cable offers the full array of cables needed for wind turbines to generate, distribute and transmit energy.

- Fiber Optic Cables
- Electronics Cables
- Control & Low-Voltage Power Cables
- Medium-Voltage Power Cables
- Ground Wire
- Bare Overhead Conductor
- Underground Transmission Cables
- Submarine Power Cables
- Cable Assemblies

Ask for our Wind Power Brochure

Substations

General Cable offers products that meet specialized needs, plus a complete line of wire and cable for plant operations. Standard products are in stock or with short lead times. Custom designs can be made where opportunities warrant. Short lengths can be accommodated through General Cable's extensive network of distribution partners and agents. Engineering and commercial assistance is available to help the Utility move toward more common product designs offering lower minimums and shorter lead-times.

600 V Instrumentation Cables

- FREP E-1
- XLPE/HYP
- VNTC K-2
- XLPO/LSZH

600 V Control Cables

- FREP E-1
- XLPE/HYP
- VNTC K-2
- XLPO/LSZH
- 20/10

4 Tessenner Drive, Highland Heights, Kentucky 41076-9753

GENERAL CABLE, BICC, BIFILL, CDC, EMPOWR, POWRNET, POWRSERV, SILEC CABLE, STRANDFILL, T-2, TRANSPWR and TRIFILL are trademarks of General Cable Technologies Corporation.

©2010 General Cable Technologies Corporation.
Highland Heights, KY 41076
All rights reserved. Printed in USA.



Phone: 1.800.237.2726
1.859.572.8000
Fax: 1.859.547.8072
www.generalcable.com
Form No. UTY-0045-0410



TransPowr[®] Bare Transmission & Distribution Conductors (AAC, AAAC, ACSR, ACSS, AACAR, ACAR)



TransPowr[®] Single Layer Bare Distribution Conductors (AAC, AAAC, ACSR)



TransPowr[®] Bare Transmission & Distribution TW Conductors (AAC/TW, ACSR/TW, ACSS/TW)



TransPowr[®] Bare Transmission & Distribution T-2[®] Conductors (AAC/T-2[®], ACSR/T-2[®])



Weatherproof Line Wire Overhead Conductor



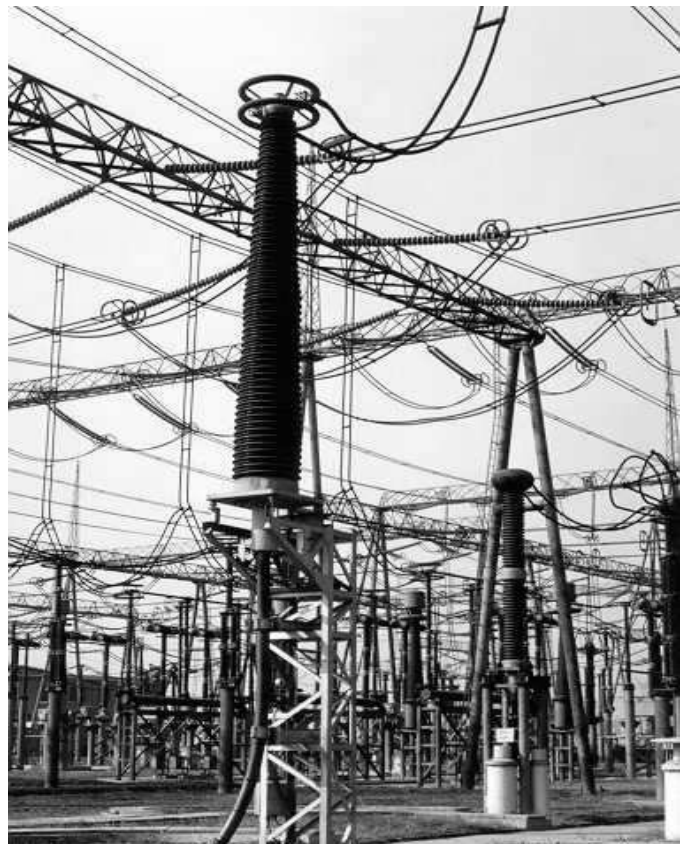
Silec High- and Extra-High-Voltage Smooth Aluminum Sheath Cable



Silec High- and Extra-High-Voltage Lead Sheathed Cable with Optic Fibers



Silec High- and Extra-High-Voltage Wire Shield Cable





EmPowr[®] Medium-Voltage EPR or TRXLPE Insulation
Helically Applied Copper Tape Shielded Power 5 - 46 kV



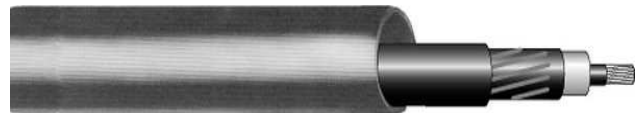
EmPowr[®] Medium-Voltage EPR or TRXLPE Insulation
Helically Applied Copper Wire Shielded Power 5 - 46 kV



EmPowr[®] Medium-Voltage EPR or TRXLPE Insulation
Longitudinally Applied Corrugated Tape (LACT) Copper Shielded
Power 5 - 46 kV



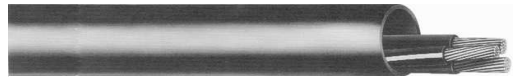
PowrPak Medium-Voltage PILC Replacement EPR Insulation Flat
Strap Copper Concentric Neutral Power 5 - 46 kV



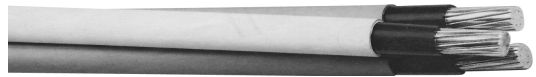
EmPowr[®] Combined Duct and Cable (CDC[®]) featuring EPR or
TRXLPE Insulation Copper Concentric Neutral Power 5 - 46 kV



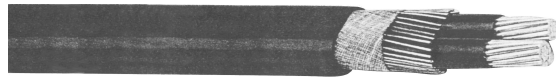
PowrServ[®] XL or AR Underground Distribution Cable



PowrServ[®] Combined Duct and Cable (CDC[®])
Underground Distribution



PowrServ[®] Underground Secondary Cable Type USEI-90/USC90



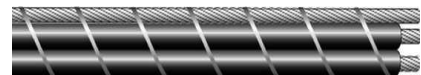
PowrServ[®] Underground Secondary Cable Type USEB-90



PowrServ[®] Service Drop Cable Neutral-Supported



PowrServ[®] Reverse Twist Secondary (RTS)



PowrServ[®] Parallel Secondary PLAC

4 Tesseneer Drive, Highland Heights, Kentucky 41076-9753

GENERAL CABLE, BICC, BIFILL, CDC, EMPOWR, POWRNET, POWRSERV, SILEC CABLE, STRANDFILL, T-2, TRANSPWR and TRIFILL are trademarks of General Cable Technologies Corporation.

©2010 General Cable Technologies Corporation.
Highland Heights, KY 41076
All rights reserved. Printed in USA.



Phone: 1.800.237.2726
1.859.572.8000
Fax: 1.859.547.8072
www.generalcable.com
Form No. UTY-0045-0410