

PanGen® 6A



PanGen® offers a Category 6A solution that provides a cost-effective 10GBASE-T option.

Key features and benefits of the PanGen® 6A solution:

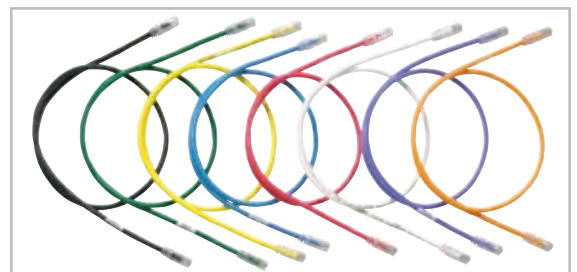
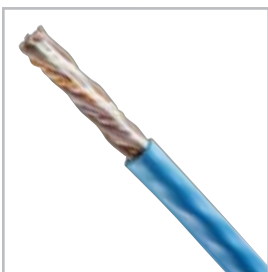
- Designed to meet ANSI/TIA 568 C.2 Category 6A channel requirements
- Installations are covered by a 25-year comprehensive warranty program that provides performance to the latest industry standards
- A single point of contact for all PanGen® inquiries
- All connectivity components are 100% performance-tested

Quality installation of PanGen® systems is provided through an extensive network of specially trained and certified Panduit installers. Meeting stringent qualification requirements, our Panduit installers receive continuous training on products, standards and installation practices. PanGen® customers have access to nationwide technical support from the design stage to post-system-installation support.

The PanGen 6A system delivers compliant performance on all electrical parameters to provide a system that meets all applicable standards.

- Cable contains an aerated jacket that encompasses the inner core to reduce the capacitance effect of the outer sheath and permits consistent electrical performance at a smaller overall size
- TRU-Mark® footage marking system to help eliminate unused lengths of cable and save installation time
- Patent-pending Enhanced Giga-TX™ technology for jack module termination, which optimizes performance by maintaining cable pair geometry and eliminating conductor untwist
- Keyed connectivity available to mechanically and visually distinguish connections to prevent unintentional mating with unlike keyed or non-keyed ports accommodating discrete networks
- Patch cords include slender strain-relief boots for easy access in high density applications and patented tangle-free latch which prevents snags and provides easy release for easy moves, adds and changes
- Modular and punchdown patch panels in flat, angled and high density versions (48-port, 1 RU)

For additional connectivity components, visit www.panduit.com



Complete end-to-end system from General Cable and Panduit



PanGen® 6A



PanGen® 6A Solution: Guaranteed to TIA/EIA Category 6A System

Frequency (MHz)	TIA/EIA Cat 6A Insertion Loss (dB)	TIA/EIA Cat 6A PSNEXT (dB)	TIA/EIA Cat 6A PSAACRF (dB)	TIA/EIA Cat 6A PSACRF (dB)	TIA/EIA Cat 6A ACRF (dB)	TIA/EIA Cat 6A PSANEXT (dB)	TIA/EIA Cat 6A NEXT (dB)	TIA/EIA Cat 6A Return Loss (dB)
1	2.3	62.0	67.0	60.3	63.3	67.0	65.0	19.0
4	4.2	60.5	65.0	48.2	51.2	67.0	63.0	19.0
8	5.8	55.6	58.9	42.2	45.2	67.0	58.2	19.0
10	6.5	54.0	57.0	40.3	43.3	67.0	56.6	19.0
16	8.2	50.6	52.9	36.2	39.2	67.0	53.2	18.0
20	9.2	49.0	51.0	34.2	37.2	67.0	51.6	17.5
25	10.2	47.3	49.0	32.3	35.3	66.0	50.0	17.0
31.25	11.5	45.7	47.1	30.4	33.4	65.1	48.4	16.5
62.5	16.4	40.6	41.1	24.3	27.3	62.0	43.4	14.0
100	20.9	37.1	37.0	20.3	23.3	60.0	39.9	12.0
200	30.1	31.9	31.0	14.2	17.2	55.5	34.8	9.0
250	33.9	30.2	29.0	12.3	15.3	54.0	33.1	8.0
300	37.4	28.8	27.5	10.7	13.7	52.8	31.7	7.2
400	43.7	25.8	25.0	8.2	11.2	51.0	28.7	6.0
500	49.3	23.2	23.0	6.3	9.3	49.5	26.1	6.0

Not applicable for zone configurations.

General Cable GenSPEED® 10,000 Category 6A Cable

Jacket Color	Spool	
	CMR (Riser)	CMP (Plenum)
Blue	7133819	7131819
White	7133820	7131820
Yellow	7133821	7131821
Gray	7133822	7131822
Red	7133823	7131823
Orange	7133824	7131824
Green	7133825	7131825
Black	7133826	7131826
Pink	7133827	7131827
Purple	7133828	7131828

Panduit Category 6A Components

Part Number	Description
Jack Modules	
CJ6X88TGIW*	Mini-Com® TX6A™ 10Gig™ UTP Jack Module
Keyed Jack Modules	
CJK6X88TGBL**	Mini-Com® TX6A™ 10Gig™ Keyed UTP Jack Module

*For standard colors other than Off White (IW), replace suffix with BL (Black), BU (Blue), RD (Red), YL (Yellow), GR (Green), EI (Electric Ivory), IG (International Gray), WH (White), OR (Orange) or VL (Violet).

**For standard colors other than Black (BL), replace suffix with BU (Blue), RD (Red), YL (Yellow), GR (Green) or OR (Orange), each color representing a different keyed configuration.

Part Number	Description
Patch Cords	
UTP6A3^Y	TX6A™ 10Gig™ UTP Patch Cord with MaTriX Technology
Keyed Patch Cords	
UTPK6A3BL^^	TX6A™ 10Gig™ Keyed UTP Patch Cord with MaTriX Technology

^ For standard lengths 3 to 20 feet (one-foot increments) and 25, 30, 35, 40 feet, change the length designation in the part number to the desired length. For standard cable colors other than Off White, add suffix BL (Black), BU (Blue), RD (Red), YL (Yellow), GR (Green), OR (Orange) or VL (Violet) to the end of the part number. For example, the part number of a blue, 15-foot patch cord is UTP6A15BU.

^^ For standard lengths other than 3 feet (5, 7, 10, 14 feet), change the length designation in the part number to the desired length. For standard cable colors other than Black (BL), replace suffix with BU (Blue), RD (Red), YL (Yellow), GR (Green) or OR (Orange) at the end of the part number. For example, the part number of a blue, 15-foot, keyed patch cord is UTPK6A15BU.

Part Number	Description	No. of Rack Spaces
Modular Patch Panels		
CPPA24FMWBLY	Mini-Com®, Angled, 24-port, flush mount modular patch panel	1
CPPA48FMWBLY	Mini-Com®, Angled, 48-port, flush mount modular patch panel	2
CPP24FMWBLY	Mini-Com®, Straight, 24-port, flush mount modular patch panel	1
CPP48FMWBLY	Mini-Com®, Straight, 48-port, flush mount modular patch panel	2
Punchdown Patch Panels		
DPA246X88TGY	24-port, Angled, Category 6A, 10 Gb/s patch panel with 24 RJ45, 8-position, 8-wire ports	1
DPA486X88TGY	48-port, Angled, Category 6A, 10 Gb/s patch panel with 48 RJ45, 8-position, 8-wire ports	2
DP246X88TGY	24-port, Straight, Category 6A, 10 Gb/s patch panel with 24 RJ45, 8-position, 8-wire ports	1
DP486X88TGY	48-port, Straight, Category 6A, 10 Gb/s patch panel with 48 RJ45, 8-position, 8-wire ports	2

For complete offering of modular patch panels, including high density versions, visit www.panduit.com



18900 Panduit Drive
Tinley Park, IL 60487
(800) 777-3300
www.panduit.com
cs@panduit.com
SA-CODS05



4 Tessenner Dr.
Highland Heights, KY 41076
(800) 424-5666
www.generalcable.com
info@generalcable.com
Form No. DAT-0138-0510



www.pangensolutions.com

GENERAL CABLE, GEN SPEED and TRU-Mark are trademarks of General Cable Technologies Corporation. PAN GEN is a registered trademark of General Cable Technologies Corporation and Panduit.

36498